



MAURY COUNTY HEALTH DEPARTMENT

(931) 388-5757

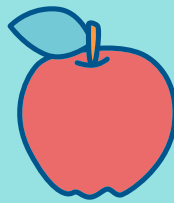
1909 Hampshire Pike, Columbia, TN 38401

Monday - Friday
8:00 a.m. - 4:30 p.m.

2152



**well-child visits
(physical exams,
immunizations,
screening tests)
performed in 2018**



5566

**visits
for nutrition
assistance provided
to women, infants,
and children in 2018**

5

**Investigations of
possible rabies
exposure in 2018**



2823

**Certified copies of
birth and death
certificates issued
in 2018**



1889

**Family planning
visits provided in
2018**



1

WIC (WOMEN, INFANTS, AND CHILDREN)

Supplemental food program that provides nutrition assessment, education, and nutritious foods at no cost to pregnant, breastfeeding, and post-partum women, infants, and children (up to age 5) at nutritional risk.

2

VITAL RECORDS

Issues certified copies of birth and death certificates regardless of where in the state the event occurred.

3

ENVIRONMENTAL HEALTH

Protect public health by providing support and education to state regulated facilities to help minimize health and safety concerns.

4

CHILD HEALTH/IMMUNIZATIONS

Well-child visits, including physical exams, screening tests and immunizations, and required Tennessee certificate of immunizations for school and daycare entry.

5

FAMILY PLANNING

A wide range of confidential and professional family planning services are available regardless of income to prevent unintended pregnancies through counseling, education, and contraceptive services.

6

TN STATE LAB

Provides quality laboratory results for the following programs: STD, Tuberculosis Control, HIV/AIDS, newborn screening, environmental services and communicable diseases.

7

TEDS/PRENATAL

The Tennessee Eligibility Determination System (TEDS) is a resource for pregnant women to apply for TennCare coverage. The local health department staff is available to assist patients in completing this process.

8

BREASTFEEDING SUPPORT

Services are provided by certified support staff who are available to help mothers and babies successfully meet breastfeeding goals. **Tennessee Breastfeeding Hotline is 855-4BFMOMS (855-423-6667).**

9

CHANT

Community Health Access and Navigation in Tennessee (CHANT) is a family centered and driven care coordination process, in which a trained care coordinator meets with the family to provide assessments, education, and referrals to community resources. Target populations includes prenatal/postpartum women, all children birth to age 5, TennCare Kids eligible birth-20 years, and children with special healthcare needs birth-21 years.

10

HEALTH EDUCATION

Provides health education and other services to modify behavior to prevent and manage chronic diseases and other at-risk behaviors partnering and engaging with community groups.

11

RABIES

Promote community rabies clinics and prevent the occurrence and spread of rabies within the human and animal population by investigating reports of exposures to potentially infected animals

12

TB, COMMUNICABLE DISEASES, AND STDs

Confidential testing, treatment, counseling, partner referral, and epidemiological investigations for sexually transmitted disease, including tuberculosis.

13

EMERGENCY PREPAREDNESS

Promotes public health emergency planning and response, which includes planning for response to disease outbreaks or acts of bio-terrorism, mass dispensing of antibiotics/vaccine, public education regarding emergency planning, continuity of operations in public health regions, and recruitment/training of professional volunteers.

14

TN TOBACCO QUITLINE

Offers a tobacco Quitline free to Tennessee residents. Free call, coaching, and nicotine patches (if medically eligible and in coaching) to help tobacco users quit. Call 1-800-QUIT Now or tnquitline.org

15

BREAST AND CERVICAL

Provides breast and cervical cancer screening to uninsured and qualifying women and men.

16

NEWBORN SCREENING

Detects genetic or metabolic conditions, thereby reducing morbidity, premature death, intellectual and other developmental disability through early detection and follow up.

17

WOMEN'S HEALTH

Pap tests and clinical breast exams are available for women who qualify.

18

MOTOR VOTER

Voter registration forms and assistance in completing forms are available at the health department.

19

PRIMARY CARE

Provides primary care services for uninsured adults ages 19-64. Available at the Bedford, Lawrence and Maury County health departments.

20

DENTAL

School-based dental program provides preventative dental screenings, dental sealants, fluoride, and oral health education for schools. The Lawrence, Lincoln, and Maury County health departments offer dental treatment for children and adults who qualify.