

## *Earth's Canopy*

**Program Description:** Appropriate for ages 5 - 8 (K - 3<sup>rd</sup> grade)

Focuses on tree and leaf identification and how trees fit into the park ecosystem. Children create a “tree friend” and leaf etchings to use in a leaf collage, discover how to measure tree height and discuss how trees are used by humans, animals and plants. This program includes a hike with instruction on how to use field guides to identify trees, and in the Fall months the program includes a hike and leaf collection scavenger hunt using tree identification guides.

### **Key Activities:**

Tree Friends - Outdoor readings of Leaf Man by Lois Ehlert and selected poems from Old Elm Speaks: Tree Poems set the mood for the children to create a face to put on a tree at his or her home. Discussion of the how different trees look from each other and what that may mean to how to make the face (i.e. long branches = long hair/girl? or small tree = child face?)

Journal - In the journal, write a description (or draw a picture) of the tree friend and create a life history of him or her and write it and small story about it.

Leaf Etchings - Using leaves found on the ground during the hike, create leaf etchings. Discuss the anatomy of the leaf and why leaves fall off trees and why some trees are “evergreens.” Using the etchings cut out and assemble a leaf collage to take home.

Tree Height - Using the artist’s method, divide into small groups of 4 and estimate tree height.

### **Presenter:**

A program by a TWRA agent or a UT Ag Extension agent would be a great addition to this program. For older students, an element of history could be added by inviting a historical interpreter to do a program and then discuss how trees and plants were used in that particular time period.

### **Hike:**

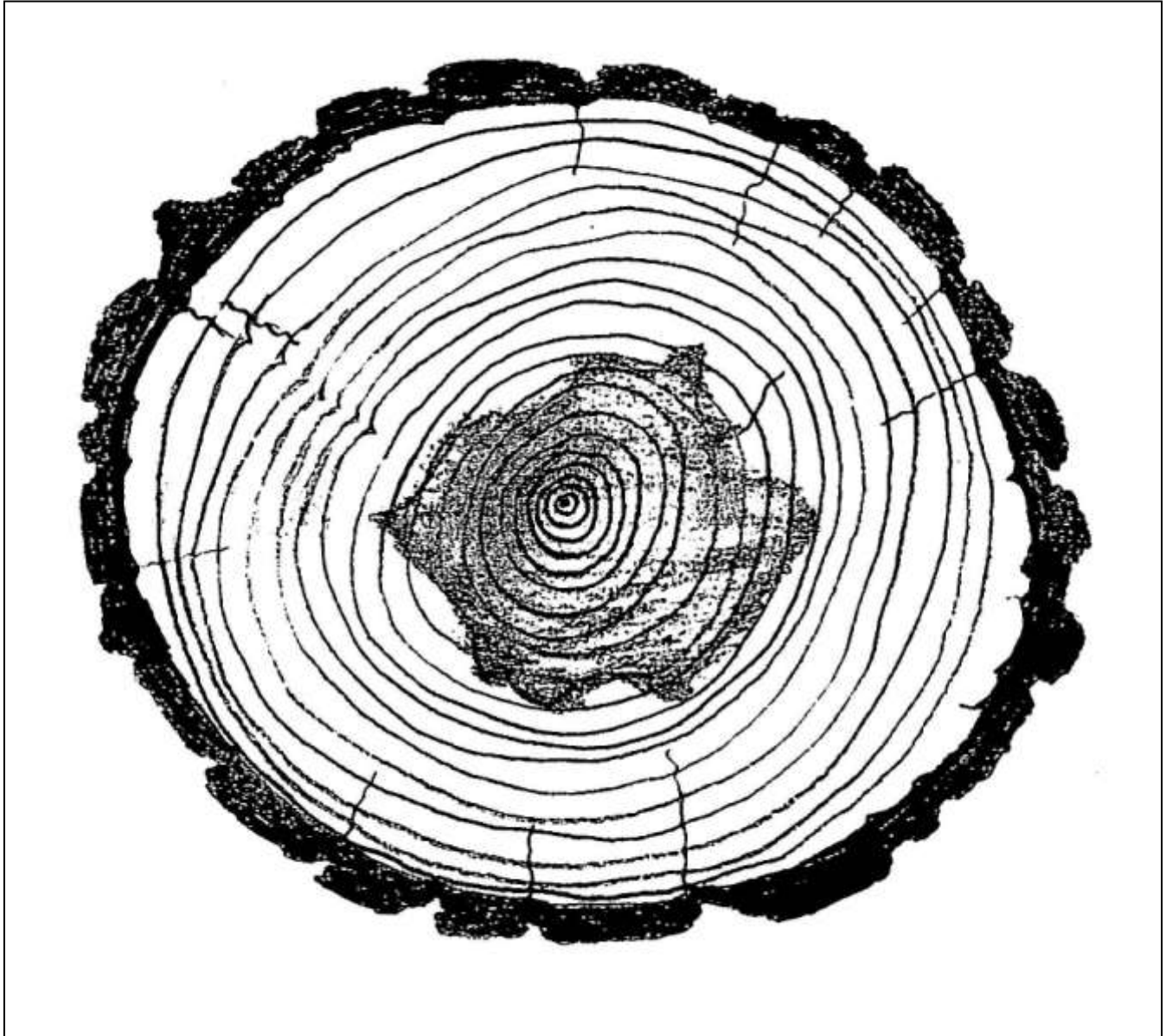
The hiking trail is available for groups to traverse in short or longer distances, depending on the size and ability level of participants. A portion of the trail is handicapped accessible.

**\*\*Each child will receive a bookmark leaf identification guide and a small nature journal\*\***

## *Earth's Canopy*

How old is this tree? Count the rings and find out! Each ring = one year of growth.

\_\_\_\_\_ years



If this tree was cut down in 1983, then in what year was the tree planted?

Subtract the age of the tree \_\_\_\_\_ from the year it was cut down \_\_\_\_\_.

_____	Year it was cut down
- _____	Age of the tree
= _____	Year tree was planted

# *Earth's Canopy*

## Tree Uses

*Give at least 5 ways trees are used by each group*

People	1. 2. 3. 4. 5.
Animals	1. 2. 3. 4. 5.
Plants	1. 2. 3. 4. 5.

*Draw a way that YOU use trees:*

## *Earth's Canopy*

### Leaves

There are two types of trees: Deciduous trees and Coniferous trees.

Here are some of the main differences between them:

#### Deciduous Trees

- \* Leaves
- \* Leaves turn colors and fall off for winter
- \* Can bear fruit or nuts with seeds inside
- \* Hardwood

#### Coniferous Trees

- \* Needles
- \* Needles may turn brown, but don't fall off
- \* Have cones with seeds inside
- \* Softwood

*Fact: Coniferous trees are also called Evergreens, but some aren't always green!*

### Matching

Put a **D** for **deciduous** or a **C** for **coniferous** beside the right picture.



\_\_\_\_\_



\_\_\_\_\_



\_\_\_\_\_



\_\_\_\_\_



\_\_\_\_\_



\_\_\_\_\_

What is your favorite kind of tree? \_\_\_\_\_

Why? \_\_\_\_\_

\_\_\_\_\_

## Additional Resources

*Books are available at Maury County Public Library*

### Leaf Man by Lois Ehlert

*A wonderful story with beautiful imagery for preschool and Kindergarteners to begin an exploration of trees, leaves and art.*

### The Kids' Wildlife Book, by Warner Shedd

*An all-around great reference book for kids of all ages.*

### Nature with Children of All Ages, by Edith A. Sisson

*This is a good resource for educators and parents who wish to incorporate easy to do nature activities and experiments.*

### Old Elm Speaks: Tree Poems by Kristine O'Connell George

*Short poems about trees with great illustrations that are perfect for introducing poetry to young children.*

### One Small Square: Woods by Donald M. Silver

*This is a great reference for all things in woodsy with activities, great illustrations, and diagrams.*

### <http://www.realtrees4kids.org/>

*A one-stop website for grades K-12 all about trees - lesson plans, songs, activities, field guides and great pictures.*

### Tell Me, Tree: All about trees for kids by Gail Gibbons

*A resource for young children that has easy to read text and great illustrations of different species of trees and the basic information about lifecycles, types and parts of trees.*

### <http://www.theteachersguide.com/arbordaylessonplans.htm>

*Lesson plans, educator's guides, and detailed information for all kinds subject matter, like Arbor Day, science, etc.*

### Tree Girl by T.A. Barron

*A fictional story for middle school aged kids. Check out <http://www.tabarron.com/for-educators> to request a gift box for many of his books.*

### Ranger Rick's NatureScope: Trees Are Terrific! By National Wildlife Federation

*A fantastic resource for classrooms and homeschoolers that has pages to copy from for lesson plans and gives detailed information and activities.*

### Wildlife, Wildflowers, and Wild Activities: Exploring Southern Appalachia, by Jennifer Bauer

*This is another good resource for educators and parents who wish to incorporate easy to do nature activities and experiments.*

---

## Curriculum Standards Addressed

### English

Std. 1 - Language  
Std. 2 - Communication  
Std. 3 - Writing  
Std. 5 - Logic  
Std. 6 - Informational Text  
Std. 8 - Literature

### Reading

1.0 - Development of Reading & Listening Skills

### Math

Std. 1 - Mathematical Processes  
Std. 4 - Geometry & Measurement

### Science

Std. 1 - Embedded Inquiry  
Std. 2 - Interdependence  
Std. 3 - Flow of Matter & Energy  
Std. 5 - Biodiversity & Change

## Survey

Using a scale of 1-10, with 1 being "terrible" and 10 being "excellent,"  
how would you rate the following aspects of the packet?

Overall organization of packet? \_\_\_\_\_

Material covered in packet? \_\_\_\_\_

What was your favorite part of the packet and why?

---

---

What was your least favorite part of the packet and why? \_\_\_\_\_

---

Did you find the available handouts helpful? Why or why not? \_\_\_\_\_

---

What could be done to improve future environmental education endeavors? (special topics,  
other types of programs, facilities, etc.)

---

---

Other comments:

---

---

---